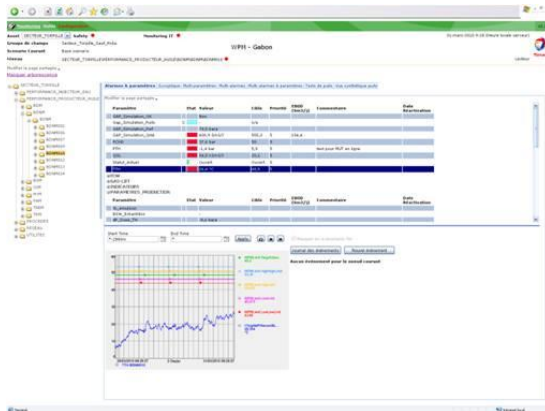


Well Performance Monitoring Production Optimization in Real Time



TOTAL DGEP



Intelligent Oil Field Alarm and Well Performance Optimization in Real Time Client needs to optimize well performance. The WPM project is based on these workflows and functionalities and is deployed on multiple assets.

Business challenge

- ▶ Improve Well Performance for artificial lifted wells (gas-lift, ...°):
- ▶ Use real time information from the platforms
- ▶ Intelligent alarms to detect production shortfall
- ▶ Contextual information to help the WPM team diagnose and correct production problems
- ▶ Interface with production and reservoir data bases

Solution

- ▶ Complete service contract for implementation and support
- ▶ Multiple deployments (Congo, Gabon, Angola, UK, ...)
- ▶ OSIsoft RtPM system coupled with Petroleum Experts Prosper/GAP well and network simulation tools
- ▶ Web based application, combining real time and simulated data

Benefit

- ▶ Increased production, documented in SPE paper 110296
- ▶ Better knowledge of the actual behavior of the field for local staff and benefit of the advices of the central experts
- ▶ System is running on several gas lifted field
- ▶ Generic infrastructure (Data capture and application interfaces, processing and storage using RtPM, Web access through MS SharePoint Portal, reusable for ESP, SAGD, ...)